

\$79,000 - 6 Pine Place E, Claresholm

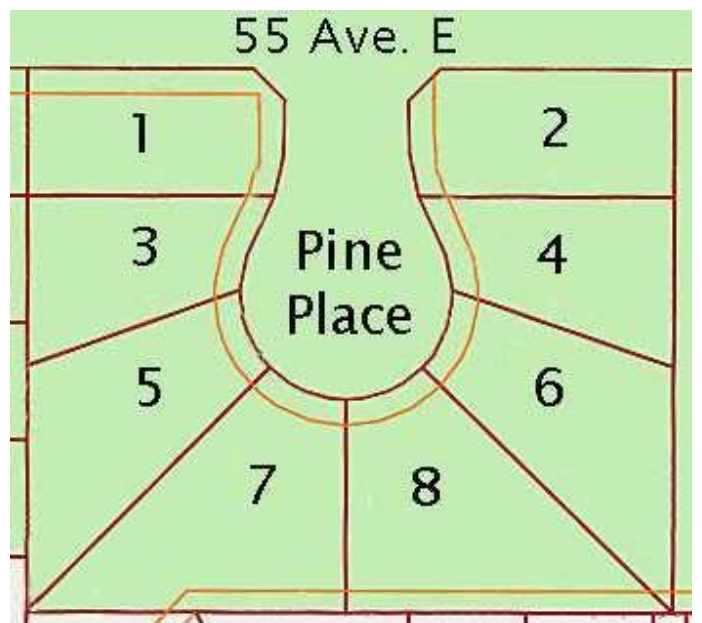
MLS® #A2176920

\$79,000

0 Bedroom, 0.00 Bathroom,
Land on 0.20 Acres

NONE, Claresholm, Alberta

Welcome to Claresholm's newest subdivision, Pine Place East. Tucked up in the NE corner of town and backing onto Patterson Park. This is one of the eight lots available. Individuals and developers welcome. R1 zoning and GST applicable.



Essential Information

MLS® #	A2176920
Price	\$79,000
Bathrooms	0.00
Acres	0.20
Type	Land
Sub-Type	Residential Land
Status	Active

Community Information

Address	6 Pine Place E
Subdivision	NONE
City	Claresholm
County	Willow Creek No. 26, M.D. of
Province	Alberta
Postal Code	T0L 0T0

Amenities

Utilities Electricity Available, Natural Gas Available, Underground Utilities

Additional Information

Date Listed November 1st, 2024



Days on Market 162

Zoning R1

Listing Details

Listing Office MaxWell Capital Realty

Data is supplied by Pillar 9â„¢ MLSÂ® System. Pillar 9â„¢ is the owner of the copyright in its MLSÂ® System. Data is deemed reliable but is not guaranteed accurate by Pillar 9â„¢. The trademarks MLSÂ®, Multiple Listing ServiceÂ® and the associated logos are owned by The Canadian Real Estate Association (CREA) and identify the quality of services provided by real estate professionals who are members of CREA. Used under license.