

# \$579,980 - 639 Maidstone Drive, Calgary

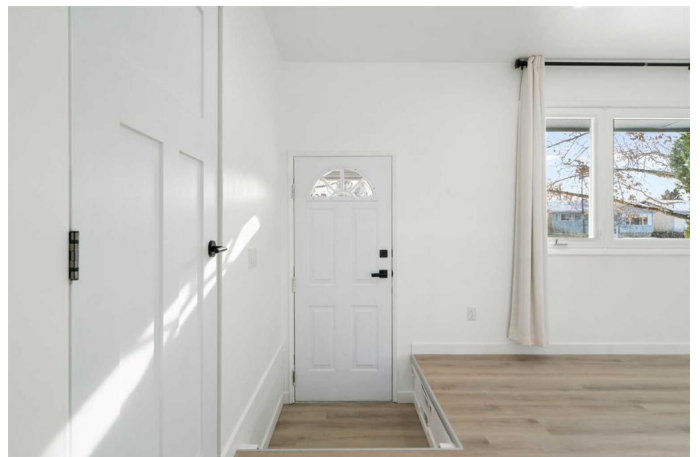
MLS® #A2199027

**\$579,980**

4 Bedroom, 2.00 Bathroom, 969 sqft  
Residential on 0.11 Acres

Marlborough Park, Calgary, Alberta

OPEN HOUSE SATURDAY APRIL 5 11-1 AND SUNDAY APRIL 6 11-1. PRICE IMPROVEMENT! Nestled on the most sought-after, tree-lined boulevard streets, this beautifully transformed bungalow is ready to impress. The main floor boasts a fully renovated kitchen featuring sleek NEW cabinetry, modern lighting, BRAND NEW stainless steel appliances, and luxurious quartz countertops. The bright and spacious living and dining areas are bathed in natural light, courtesy of large south-facing windows, offering the perfect setting for both relaxation and entertaining. The main level also includes three bedrooms, a thoughtfully updated bathroom, and a convenient washer and dryer. The fully renovated basement is a standout feature, complete with a BRAND NEW full kitchen, stainless steel appliances, a modern bathroom, and its own laundry. The basement also offers a large bedroom and a versatile den, which can easily be converted into a second (smaller) bedroom. While egress windows could be added at an affordable cost in the future, the space is already painted and illuminated with stylish new lighting. Outside, the expansive backyard is fully fenced, providing privacy and ample room for your family and pets to enjoy. The property also includes an oversized, heated garage! Located just steps away from Big Marlborough Park, an ice-skating rink, tennis courts, baseball diamonds, playground and walking distance to local schools; this quiet, well-established



neighbourhood is a hidden gem. With a convenient 13-minute commute to downtown, Marlborough Park offers the perfect balance of tranquility and accessibility. Schedule your showing today!

Built in 1973

### Essential Information

MLS® #	A2199027
Price	\$579,980
Bedrooms	4
Bathrooms	2.00
Full Baths	2
Square Footage	969
Acres	0.11
Year Built	1973
Type	Residential
Sub-Type	Detached
Style	Bungalow
Status	Active

### Community Information

Address	639 Maidstone Drive
Subdivision	Marlborough Park
City	Calgary
County	Calgary
Province	Alberta
Postal Code	T2A4B6

### Amenities

Parking Spaces	2
Parking	Double Garage Detached
# of Garages	2

### Interior

Interior Features	No Animal Home, No Smoking Home, Open Floorplan, Pantry, Quartz Counters
Appliances	Window Coverings

Heating	Forced Air, Natural Gas
Cooling	None
Has Basement	Yes
Basement	Finished, Full

### **Exterior**

Exterior Features	Private Yard
Lot Description	Few Trees, Private, Rectangular Lot
Roof	Asphalt Shingle
Construction	Metal Siding, Stucco
Foundation	Poured Concrete

### **Additional Information**

Date Listed	March 4th, 2025
Days on Market	44
Zoning	R-CG

### **Listing Details**

Listing Office	Real Estate Professionals Inc.
----------------	--------------------------------

Data is supplied by Pillar 9â„¢ MLSÂ® System. Pillar 9â„¢ is the owner of the copyright in its MLSÂ® System. Data is deemed reliable but is not guaranteed accurate by Pillar 9â„¢. The trademarks MLSÂ®, Multiple Listing ServiceÂ® and the associated logos are owned by The Canadian Real Estate Association (CREA) and identify the quality of services provided by real estate professionals who are members of CREA. Used under license.